

# Test Report

Report No. ECL01J014786002

Page 1 of 4

Applicant BOOM INDUSTRY (SH) CO.,LTD

Address 3F NO.22 LANE1555, HUICHUANG INTERNATIONAL BUSINESS DISTRICT, WEST JINSHAJIANG ROAD,SHANGHAI. CHINA

The following sample(s) and sample information was/were submitted and identified by/on the behalf of the client

Sample Name Titanium Dioxide  
Part No. R-97  
Item/Lot No. BM776-R97-0160  
Sample Received Date Mar. 17, 2017  
Testing Period Mar. 17, 2017 to Mar. 22, 2017

Test Requested As specified by client, to test Lead (Pb), Cadmium (Cd), Mercury (Hg), Hexavalent Chromium(Cr(VI)), Polybrominated Biphenyls(PBBs), Polybrominated Diphenyl Ethers(PBDEs) in the submitted sample(s).

## Test Method

Test Item(s)	Test Method	Measured Equipment(s)
Lead (Pb)	IEC 62321-5:2013 Ed.1.0	ICP-OES
Cadmium (Cd)	IEC 62321-5:2013 Ed.1.0	ICP-OES
Mercury (Hg)	IEC 62321-4:2013 Ed.1.0	ICP-OES
Hexavalent Chromium(Cr(VI))	IEC 62321:2008 Ed.1 Annex C	UV-Vis
Polybrominated Biphenyls(PBBs)	IEC 62321-6:2015	GC-MS
Polybrominated Diphenyl Ethers(PBDEs)	IEC 62321-6:2015	GC-MS

Test Result(s) Please refer to the following page(s).

Tested by

*Wang Dong*

Approved by

*Su Hongwei*

Su Hongwei

Senior Laboratory Manager

Centre Testing International Pinbiao(Shanghai) Co., Ltd.

Reviewed by

*Summer Xu*

Date

Mar. 22, 2017

No. R188382627

No.1996,Xinjinqiao Road, Pudong New District,Shanghai,China

# Test Report

Report No. ECL01J014786002

Page 2 of 4

## Test Result(s)

Tested Item(s)	Result	MDL
Lead (Pb)	N.D.	2 mg/kg
Cadmium (Cd)	N.D.	2 mg/kg
Mercury (Hg)	N.D.	2 mg/kg
Hexavalent Chromium (Cr(VI))	N.D.	2 mg/kg

Tested Item(s)	Result	MDL
<b>Polybrominated Biphenyls(PBBs)</b>		
Monobromobiphenyl	N.D.	5 mg/kg
Dibromobiphenyl	N.D.	5 mg/kg
Tribromobiphenyl	N.D.	5 mg/kg
Tetrabromobiphenyl	N.D.	5 mg/kg
Pentabromobiphenyl	N.D.	5 mg/kg
Hexabromobiphenyl	N.D.	5 mg/kg
Heptabromobiphenyl	N.D.	5 mg/kg
Octabromobiphenyl	N.D.	5 mg/kg
Nonabromobiphenyl	N.D.	5 mg/kg
Decabromobiphenyl	N.D.	5 mg/kg

Tested Item(s)	Result	MDL
<b>Polybrominated Diphenyl Ethers(PBDEs)</b>		
Monobromodiphenyl ether	N.D.	5 mg/kg
Dibromodiphenyl ether	N.D.	5 mg/kg
Tribromodiphenyl ether	N.D.	5 mg/kg
Tetrabromodiphenyl ether	N.D.	5 mg/kg
Pentabromodiphenyl ether	N.D.	5 mg/kg
Hexabromodiphenyl ether	N.D.	5 mg/kg
Heptabromodiphenyl ether	N.D.	5 mg/kg
Octabromodiphenyl ether	N.D.	5 mg/kg
Nonabromodiphenyl ether	N.D.	5 mg/kg
Decabromodiphenyl ether	N.D.	5 mg/kg

**Tested Sample/Part Description** White powder

**Remark:** The sample(s) had been dissolved totally tested for Lead, Cadmium, Mercury.

-MDL = Method Detection Limit

-N.D. = Not Detected (<MDL )

-mg/kg = ppm = parts per million

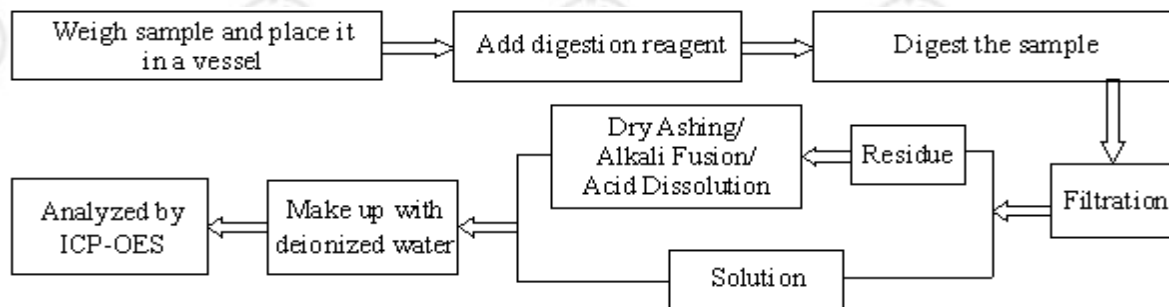
# Test Report

Report No. ECL01J014786002

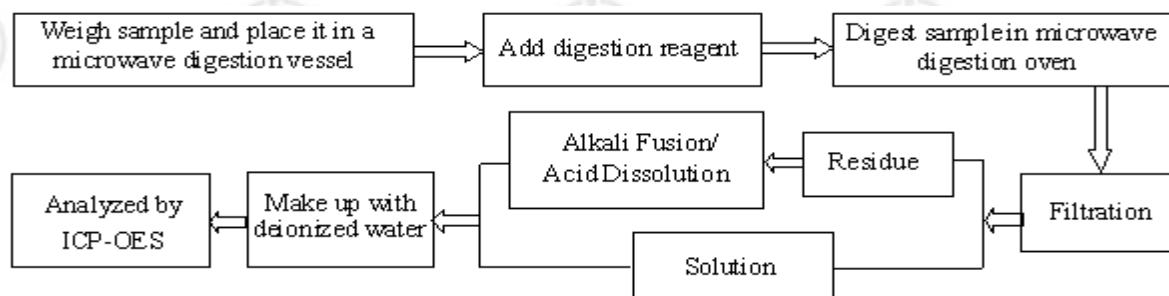
Page 3 of 4

## Test Process

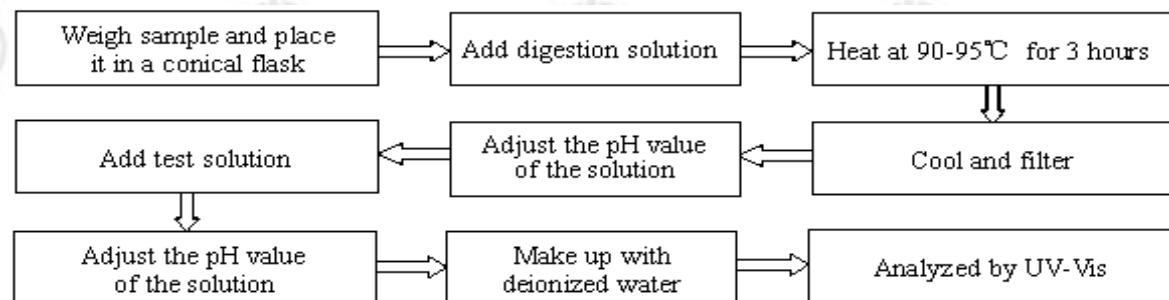
### 1. Lead (Pb), Cadmium (Cd)



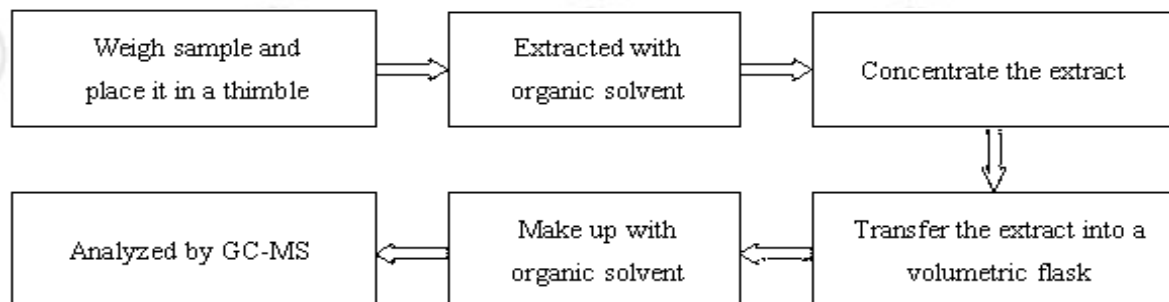
### 2. Mercury (Hg)



### 3. Hexavalent Chromium(Cr(VI))



### 4. Polybrominated Biphenyls(PBBs) , Polybrominated Diphenyl Ethers(PBDEs)

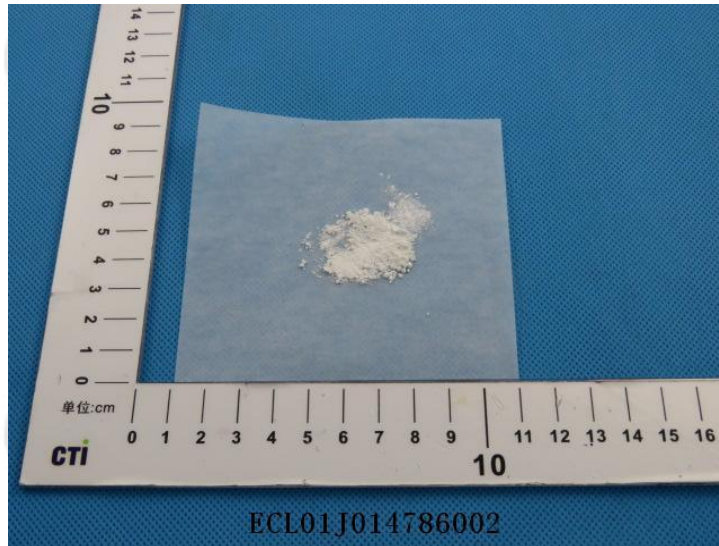


# Test Report

Report No. ECL01J014786002

Page 4 of 4

## Photo(s) of the sample(s)



\*\*\* End of report \*\*\*

The test report is effective only with both signature and specialized stamp. The result(s) shown in this report refer only to the sample(s) tested. Without written approval of CTI, this report can't be reproduced except in full.